

Benfotiamine



Hamari Chemicals, Ltd.

Features

- ✓ improves polyneuropathy
- ✓ supports normal kidney function
- ✓ maintains normal endothelial function for optimal cardiovascular health
- ✓ controls formation of Advanced Glycation Endproducts (AGEs)
- ✓ significant scientific literature and a history of safe use for over 50 years

- ✓ cGMP management, ISO 14001, Kosher Certified
- ✓ Hamari's Benfotiamine is registered with over 50 Regulatory Authorities in the world for over 80 finished dosage forms
- ✓ Hamari's Benfotiamine has a clear US GRAS Regulatory Status



Method of Action

Benfotiamine is an analogue of Vitamin B1 (also known as Thiamine) that is more readily bioavailable and significantly more active than traditional forms of Thiamine.

Benfotiamine

- ✓ assists the body in responding to the toxic breakdown compounds of excess sugar
- ✓ reduces elevated levels of intracellular glucose and the potential for AGE formation
- ✓ stimulates Transketolase, an enzyme that helps convert toxic compounds to harmless ones
- ✓ elevates Thiamine concentration in the body

Benfotiamine Specification Sheet

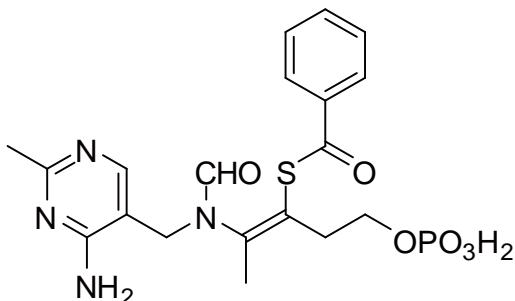
I. Substance

Name: Benfotiamine

Systematic Chemical Name: S-Benfotiamine O-monophosphate

CAS Number: 22457-89-2

Structural formula, molecular formula and molecular weight



Molecular Formula: C₁₉H₂₃N₄O₆PS

Molecular Weight: 466.45 g/mol

Manufacturer: Yonezawa Hamari Chemicals, Ltd. (JAPAN)

II. Standard Tests

The Japanese Pharmaceutical Codex and Yonezawa Hamari Chemicals, Ltd.

III. Storage

Storage instructions: Store in tightly-closed containers

Standard package size: 50 kg

IV. Recommended Dose

Single Ingredient Dosage Form:

- ✓ Hard or soft capsule, or tablet
- ✓ 300 to 600 mg Benfotiamine in two divided doses with meals
(150 mg or 300 mg twice daily)

Multiple Ingredients Forms:

- ✓ B-Complex multi-vitamin formulations containing Vitamin B6 and/or Vitamin B12
- ✓ Energy booster beverages



Hamari Chemicals, Ltd.

e-mail: ask@hamari.co.jp

tel: +81-6-6205-7755

fax: +81-6-6205-7222